



## TANK MELTING SYSTEM IDM-GP

The tank melting systems **IDM-GP**, available in **6, 9** and **12** liters tank volume, have been designed in order to provide the customer with the most optimal value-for-money.

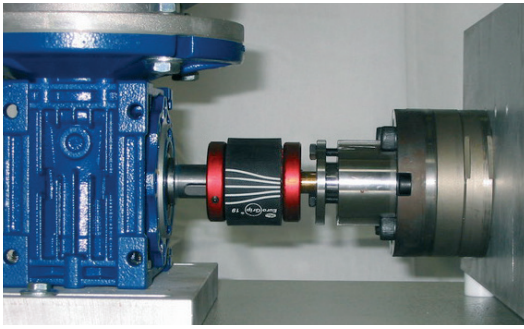
The hot melt systems **IDM-GP** ensure efficient and precise adhesive dosing, through the installation of gear pumps of different flow rates, accordingly the customer's production demands (pumps available from 0.8 up to 10 cc/rev.).

This is a range of systems provided with new optimized design, granting simplicity and functionality at the best competitive price.

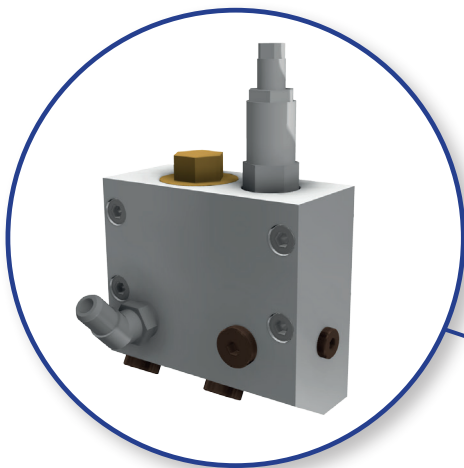


Equipped with **TOUCH SCREEN operator panel 7"**, **IDM-GP** systems are able to offer a user-friendly interface, including pattern control, timer for switching ON/OFF, Economy mode, failure and anomalies report on the display.

One of the most relevant advantages is the perfect compatibility with all other brands in the market: available in **PT100, Ni120** and **NTC** thermo-sensors, 100% interchangeable with any other hot melt tank melting system.



Gear pumps available in different capacities, from **0.8** up to **10 cc/rev.**, ensuring a more regular and homogeneous adhesive application compared to use piston pump systems.



**Manifold**

On the rear part of IDM-GP systems, Idealtech has installed a manifold equipped with:

- High flow filter to hold possible impurities present in the adhesive, avoiding the contamination of the equipment (heated hoses and application heads). The 100 mesh filtering cartridge is easy and quick to be replaced during maintenance operations.
- Pressure control valve in order to ensure a constant pressure during the adhesive dispensing, getting the excess Hot Melt recirculate into the tank.

Technical Details	IDM-GP 6	IDM-GP 9	IDM-GP 12
Tank capacity	6 lt	9 lt	12 lt
Melting rate	4-6 kg/h	7-9 kg/h	10-12 kg/h
Pump Flow	Da 4 a 48 kg/h		
Max. Pressure	Max. 80 BAR		
Adhesive Viscosity	100 – 80.000 mPas		
Operating Voltage	400 Volt, 3 LNPE, 50 / 60 Hz		
Dimensions (mm)	830 x 400 x 390 (h)	830 x 400 x 550 (h)	830 x 400 x 650 (h)
Weight (Kg)	45	55	70