



SPECIAL MIXING UNIT MOD. ID – HM 5 MIX

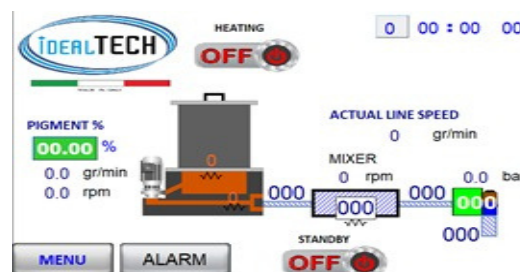
The system consists of a **4 kg capacity tank** with **piston pump and dosing system** with gear pump **driven by controlled brushless motor**, mixing screw with heating and three controlled temperature zones, **with no. 2 inlets** plus a third one for the passage of a cleaning element. **Mixer flow rate 90 Kg/H approx.**



Flat tank melting unit with piston pump double effect has a 4 kg capacity tank completely covered with Teflon.

It is equipped with the following accessories:

- N° 1 dosing gear pump fixed into the tank melting unit.
- N° 1 Brushless motor controlled by driver.
- N° 1 Heated hoses dn 6 mm. low temperature L = 4 mt. (measure must be confirmed)
- N° 1 Automatic high flow head, equipped with 2 glue inlet and non-return valve.
- N° 1 Heated static mixing nozzle with internal core daily use. (to be replaced every day)
- N° 1 Electronic board equipped with touch screen operator panel 7 " for the control of the systems.
- N° 1 Software for speed control of both the existing Drum 200 Kg and the mixing unit.
- N° 2 Heating zones to control heated hoses.
- I/O Signals for line interface.



Special Mixing Unit mod ID - HM 5 MIX composed by:

Flat tank melting unit with piston pump double effect, 4 kg capacity completely covered with Teflon

N° 1 dosing gear pump fixed into the tank melting unit

N° 1 Brushless motor controlled by driver

N° 1 Heated hoses dn 6 mm. low temperature L = 4 mt. (measure must be confirmed)

N° 1 Automatic high flow head, equipped with 2 glue inlet and non-return valve

N° 1 Heated static mixing nozzle with internal core daily use. (to be replaced every day)

N° 1 electronic board equipped with touch screen operator panel 7 " for the control of the systems

N° 1 software for speed control of both the existing Drum 200 Kg and the mixing unit

N° 2 Heating zones to control heated hoses

I/O Signals for line interface